

THANK YOU FOR YOUR INTEREST IN OUR PRODUCTS

Multi-Clean manufactures quality chemical proportioning equipment. Please use this equipment carefully and observe all warnings and cautions.

*****NOTE *****

WEAR	protective clothing and eyewear when dispensing chemicals or other materials.
ALWAYS	observe safety and handling instructions of the chemical manufacturers.
ALWAYS	direct discharge away from you or other persons or into approved containers.
ALWAYS	dispense cleaners and chemicals in accordance with manufacturer's instructions. Exercise CAUTION when maintaining your equipment.
KEEP	equipment clean to maintain proper operation.
WEAR	protective clothing and eyewear when working in the vicinity of all chemicals, filling or emptying equipment or changing metering tips.
ALWAYS	re-assemble equipment according to instruction procedures. Be sure all components are firmly screwed or latched into position.
ATTACH	only to tap water outlets (85 PSI maximum).
NOTE	If the unit is used to fill a sink or the discharge hose can be placed into a sink, the unit must be mounted so that the bottom of the cabinet is above the overflow rim of the sink.

Package Should Contain:

1. Proportioner unit with discharge tubes.
2. Cap/Hose Assembly (2)
3. EZ Mount Bracket.
4. Dispensing Gun.
5. Accessory kit containing: (4) mounting screws and (4) anchors.
6. Instruction sheet.
7. 6 ft. Water Supply Hose
8. Secondary Packaging Labels for Quarts.

Installation and Operation:

Option A: Direct Wall Mounting.

- 1A. Find suitable place close to water source for unit. EZ Mounting Bracket (Diagram 1) should be installed approx. 5' from floor. Level bracket and mark holes. Drill 9/32" holes & install mounting anchors and screws in bracket to wall.
- 2A. Slide cabinet on bracket (Diagram 2). Mark holes for lower cabinet screws. Remove unit & drill 9/32" hole. Install anchor and screw to lower unit hole (Diagram 3). When mounting unit do not mount any higher than 5 feet from the floor. Also, never mount your concentrate container higher than the unit. **Continue to Page 2, Step 3.**

Option B: Dispensing directly from 55 gallon drum.

You will need a Double-O-Seven Drum Kit (part #421027)

- 1B. Set up dispenser as indicated in steps 1 and 2.
- 2B. Follow instructions included with drum kit. **Continue to Page 2, Step 6.**

Option C: Mount to Wire Rack (mounted to wall).

- 1C. Use Easy Rack (sold separately, part #421230). Locate hardware kit (includes 4 bolts and 4 nylock nuts).
- 2C. Secure EZ Mounting Bracket to front face plate of wire rack using 2 bolts/nuts. Slide dispenser unit onto bracket, remove dispenser cover. Secure dispenser by inserting additional 2 bolts/nuts through key holes in dispenser through holes in wire rack. **Continue to Page 2, Step 3.**



Diagram 1



Diagram 2



Diagram 3

Installation and Operation con't:

3. Mount Easy Rack (sold separately, part #421230) to wall by using enclosed 2 screws and 2 anchors. When mounting Easy Rack separately from dispenser: Do not mount rack above dispenser; locate within two feet to the side or underneath of dispenser.
4. Attach one cap and hose assembly to a gallon of #007 Double-O-Seven Dilution Control Concentrate. Insert the open hose end of the assembly onto the hose barb on the low flow side (quart fill). Tubing can be shortened if desired.
5. Attach one cap and hose assembly to a gallon of #007 Double-O-Seven Dilution Control Concentrate. Insert the open hose end of the assembly onto the hose barb on the high flow side (mop bucket fill and autoscrubber). Place gallons into Easy Rack.
6. Connect water supply hose to water inlet swivel. (Minimum 25 PSI pressure, with water running, is required for proper operation.) Turn on water supply.
7. Purge air from system by repeated rapid depressions of activating devices. Replace unit cover. The bottle fill activates by inserting a spray bottle over the discharge tube and lifting lever until flow starts. To stop flow, lower bottle off discharge tube. The bucket fill activates by holding and depressing lever of gun. To stop flow, release lever. The lever can be locked on by flipping clip to hold lever. **CAUTION: Lever must be manually unlocked to stop flow. Overflow will result if left locked in open position.**
8. **REMEMBER TO CHECK STRAINERS PERIODICALLY FOR CLOGGING. CLEAN IF NECESSARY.**

Measurement of Concentration:

You can determine the dispensed water-to-product ratio. All that is required is to operate the primed dispenser for a minute or so and note two things: the amount of dispensed solution, and the amount of concentrate used in preparation of the solution dispensed. The water-to-product ratio is then calculated as follows:

$$\text{Dilution Ratio (X:1)} \text{ where } X = \frac{\text{Amount of Mixed Solution} - \text{Amount of Concentrate Drawn}}{\text{Amount of Concentrate Drawn}}$$

Dilution Ratio, then, equals X parts water to one part concentrate (X:1).

Double-O-Seven Accessories

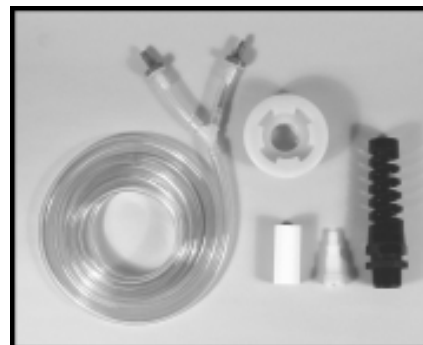
Easy Rack Part #421230



Kits Includes:

- 1 - Wire rack
- 2 - Screws and anchors
- 4 - Bolts and nylock nuts

Double-O-Seven Drum Kit Part #421027

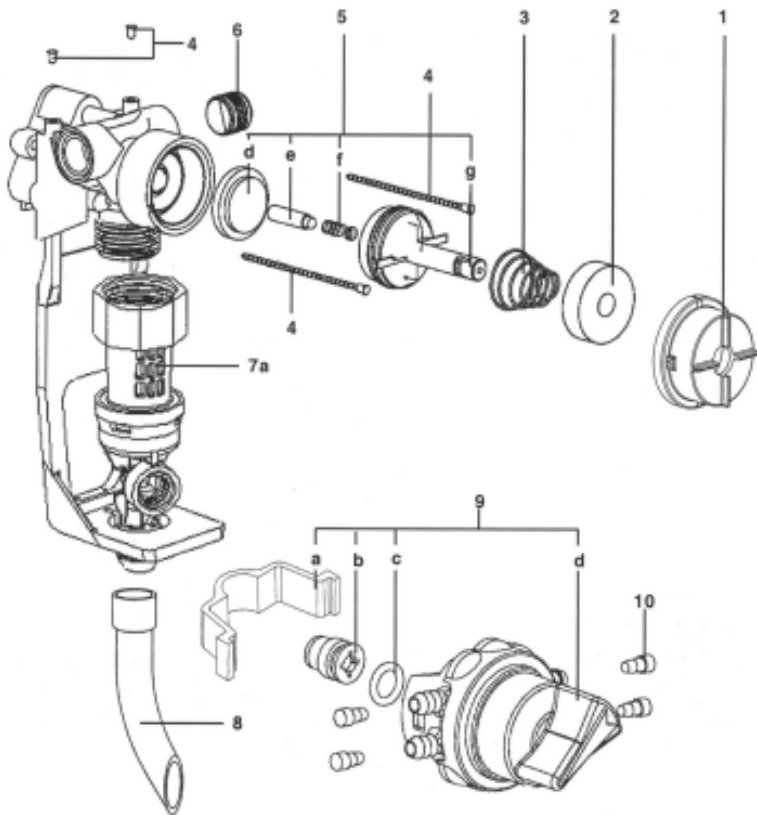
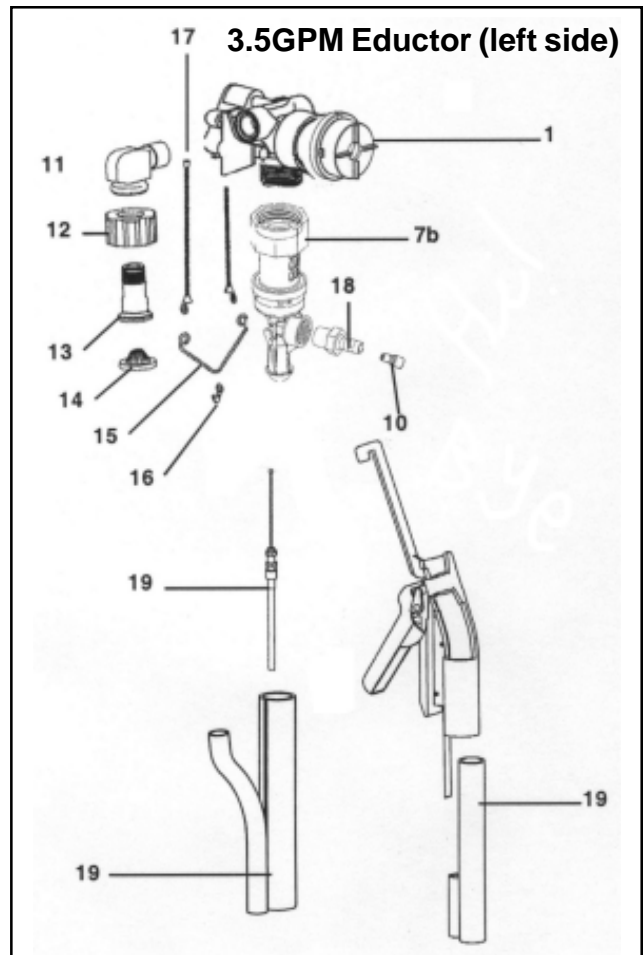


Kits Includes:

- 1 - 55 gallon drum cap with strain relief
- 1 - 8 ft. plastic hose 1/4" diameter
- 1 - Ceramic weight and check valve
- 2 - In line check valves
- 1 - Y hose barb

Double-O-Seven Parts Diagram List:

Key	Part No.	Description
1	10079003	Magnet Cover w/ chain slot
2	10079000	Magnet
3	10079010	Spring, Magnet return
4	90074612	Ball chain w/ sleeves
5	10075980	Valve parts kit d. diaphragm e. armature f. spring g. valve bonnet
6	10075925	Pipe plug, 3/8 npt x 2.54
7a	290	1GPM E-Gap Eductor Assm.
7b	291	3.5 GPM E-Gap Eductor Assm.
8	10088852	Discharge tube assm.
9	10080957	Selector Valve Kit (short) a.support clip b.suction stub c. o-ring d. select valve assembly
10	690014	Metering tip kit
11	10075156	Street elbow, 3/8 npt
12	10082830	Swivel collar
13	10082801	Swivel stem
14	238100	Strainer washer
15	90076912	Yoke cable
16	507300	Clip Adjustment
17	90076913	Cable bead chain (2)
18	3401-R	Hose barb, 1/4"
19	10088619	Gun/cable assembly
20	500821	Tubing, 1/4" x 21'
21	10089401	Check valve
22	10068721	Y hosebarb, 1/4"
23	421336	Cap/Hose Asy



ITEMS NOT SHOWN:

- Cabinet front
- Cabinet back
- 10088609 EZ Mount bracket
- 10088608 Drip tray
- 641751 Security screws (for cabinet sides)

TROUBLESHOOTING CHART:

Problem	Cause	Solution
1. No discharge	<ul style="list-style-type: none"> a. No water b. Magnetic valve not functioning c. Excessive water pressure d. Eductor clogged e. Low flow mechanism failure f. Clogged water inlet strainer 	<ul style="list-style-type: none"> a. Open water supply b. Install valve parts kit c. Install regulator if flowing water pressure exceeds 60 PSI d. Clean* or replace e. Install new parts f. Disconnect inlet water line and clean strainer
2. No concentrate draw	<ul style="list-style-type: none"> a. Clogged foot strainer b. Metering tip or eductor has scale build-up c. Low water pressure d. Discharge tube and/or flooding ring not in place (high flow only) e. Concentrate container empty f. Inlet hose barb not screwed into eductor tightly g. Clogged water inlet strainer h. Selector out of position i. Check valve installed backwards j. Air leak in chemical pick-up tube k. Clear plastic tip installed in inlet hose barb 	<ul style="list-style-type: none"> a. Clean or replace b. Clean (descale)* or replace c. Minimum 25 PSI (with water running) required to operate unit properly d. Push tube firmly onto eductor discharge hose barb, or replace tube if it doesn't have a flooding ring e. Replace with full container f. Tighten, but do not overtighten g. Disconnect inlet water line and clean strainer h. Assure selector is in position desired i. Confirm colored side is pointed toward eductor j. Put clamp on tube or replace tube if brittle k. Replace with colored metering tip
3. Excess concentrate draw	<ul style="list-style-type: none"> a. Metering tip not in place 	<ul style="list-style-type: none"> a. Press correct tip firmly into barb on select valve
4. Failure of unit to turn off	<ul style="list-style-type: none"> a. Water valve parts dirty or defective b. Magnet doesn't fully return c. Excessive water pressure d. Mechanism hangs up 	<ul style="list-style-type: none"> a. Clean* or replace with valve parts kit b. Make sure magnet moves freely. Replace spring if short or weak c. Install regulator if pressure (with water flowing) exceeds 60 PSI d. Be sure bracket is free to move and not broken
5. Excess foaming in discharge	<ul style="list-style-type: none"> a. Air leak in chemical pick-up tube 	<ul style="list-style-type: none"> a. Put clamp on tube or replace tube if brittle

* In hard water areas, scale may form inside the discharge end of the eductor, as well as in other areas of the unit that are exposed to water. This scale may be removed by soaking the eductor in a descaling solution (deliming solution). To remove an eductor located in the cabinet, firmly grasp water valve and unthread eductor. Replace in same manner. Alternatively, a scaled eductor can be cleaned (or kept from scaling) by drawing the descaling solution through the unit. Operate the unit with the suction tube in the descaling solution. Operate the unit until solution is drawn consistently, then flush the unit by drawing clear water through it for a minute. Replace concentrate container and put suction tube into concentrate.

Caution: When dispenser is not in use, shut off water supply.

WARNING & DISCLAIMER: Results may vary. Multi-Clean chemicals are to be used only by appropriately trained personnel. IMPROPER USE POSES RISK OF PHYSICAL INJURY OR PROPERTY DAMAGE. See appropriate Multi-Clean Method Bulletin for further warnings and information for your application. The suitability of and proper application of this product is the responsibility of the applier. The manufacturer disclaims all warranties, express and implied, including any warranties of MERCHANTABILITY AND FITNESS OF PURPOSE. The manufacturer's liability is limited to replacement of or reimbursement for any product proved defective. No person has authority to waive these disclaimers or make any representations or warranties on behalf of the manufacturer, except in writing signed by the manufacturer.

Multi-Clean®

600 Cardigan Road, Shoreview, Minnesota 55126 USA • Phone (651) 481-1900 Fax (651) 481-9987
 2210 Drew Road, Mississauga, Ontario Canada L5S 1B1 • Phone (905) 673-3222 Fax (905) 673-5161

988364 2/04