

Crete-TEK Polished Concrete Care Method Bulletin 1431

Preparation, application and maintenance procedures for use with the Multi-Clean® line of polished concrete products.

Crete-TEK Products
Crete-Guard
Crete-Clean
Crete-Shine



STOP - READ BEFORE PROCEEDING

This methods bulletin is to be used **only** by appropriately trained persons in conjunction with such training. **IMPROPER USE OR OPERATION OF THE MULTI-CLEAN (CHEMICALS OR EQUIPMENT) POSES RISK OF PHYSICAL INJURY OR PROPERTY DAMAGE.** Specific risks include, but are not limited to, burns, and improper application of chemical products (e.g. wrong product, wrong product combinations, improper applicator use, and improper curing.) Because successful and safe application is the responsibility and obligation of the trained applier, the manufacturer disclaims any and all warranties, express or implied, including warranties of **MERCHANTABILITY** or **FITNESS OF PURPOSE**. The manufacturer shall have no obligation except to replace repair, or pay for, in its sole discretetion, any chemical product or equipment shown to be defective.

No person has authority to waive these disclaimers or make any representations or warranties on behalf of the manufacturer, except in writing signed by the manufacturer.

If you have not had training with the particular product or equipment you intend to use, please call:

Multi-Clean at (651) 481-1900 to arrange training.

DO NOT USE THIS MULT-CLEAN SYSTEM OR ITS COMPONENT PRODUCTS WITHOUT APPROPRIATE TRAINING.

Polished concrete is a very popular flooring choice due to its sustainability and durability, but it is very tedious and expensive to install and polish. It is necessary to “grind” the concrete with a series of special pads to achieve the desired polished gloss. Due to the expense associated with this grinding, it is important to properly care for polished concrete to maintain its shine and durability.

The Crete-TEK Polished Concrete Maintenance System combines state-of-the-art cleaning and maintenance chemicals with special diamond-impregnated pads to efficiently clean, harden, and maintain the shine of any polished concrete surface, effectively reducing the need to go through the demanding task of re-grinding.

Crete-TEK includes three products:

1. Crete-Guard
2. Crete-Clean
3. Crete-Shine

The Crete-TEK Polished Concrete Maintenance System can be used on both newly installed polished concrete and existing polished concrete floors.

PROTECT FROM SPILLS AND STAINS WITH CRETE-GUARD

- 1 Crete-Guard should be applied before opening up the floor to traffic, if possible, to provide stain protection. If applying Crete-Guard to an existing concrete flooring system, it is important to know if there is currently a coating on the floor. Crete-Guard is not compatible with coatings such as epoxies, urethanes, or acrylics.

FOR NEWLY INSTALLED POLISHED CONCRETE

1. Ensure the floor is clean and free of debris.
If needed, use Crete-Clean diluted at 4 oz/gallon in a mop bucket or automatic scrubber to pre-clean the surface.



2. Use Crete-Guard straight; no dilution is necessary.
Apply Crete-Guard with a pump-up sprayer or by mop.
Ensure that the floor is completely covered to ensure proper protection.



3. Allow Crete-Guard to sit for 20-30 minutes on the surface to penetrate the concrete and develop proper oil and water resistance.

4. IMPORTANT: Rinse solution off of the floor thoroughly with a solution of Crete-Clean diluted at 2 oz/gallon using a mop bucket or autoscrubber.



5. For normal protection, apply one coat of Crete-Guard. For high traffic or vulnerable areas, apply two coats. Allow the floor to completely dry before applying a second coat of Crete-Guard.



PROTECT FROM SPILLS AND STAINS WITH CRETE-GUARD

1 Crete-Guard should be applied before opening up the floor to traffic, if possible, to provide stain protection. If applying Crete-Guard to an existing concrete flooring system, it is important to know if there is currently a coating on the floor. Crete-Guard is not compatible with coatings such as epoxies, urethanes, or acrylics.

FOR EXISTING POLISHED CONCRETE FLOORING

1. If a coating is on the floor:
 - a. It must be removed for Crete-Guard to be effective.
 - b. If you wish to use a coating over the polished concrete, do not apply Crete-Guard.

NOTE: Crete-Clean and Crete-Shine are still effective on floor coatings.

2. If the floor has previously been treated with Crete-Shine:
 - a. Apply a light solution of stripper such as Stampede diluted 1:8
 - b. Scrub with a 800-grit diamond floor pad (Twister© White or equivalent) to ensure floor is clean and bare.
 - c. Scrub with Crete-Clean at 2 oz/gallon and a 3000-grit diamond floor pad (Twister© Green pad or equivalent).

NOTE: Concrete is impervious to the caustic nature of strippers and will not be harmed by strippers.

3. Ensure the floor is clean and free of debris. If needed, use Crete-Clean diluted at 4 oz/gallon in a mop bucket or automatic scrubber to pre-clean the surface.

4. Use Crete-Guard straight; no dilution is necessary. Apply Crete-Guard with a pump-up sprayer or by mop. Ensure that the floor is completely covered to ensure proper protection.

5. Allow Crete-Guard to sit for 20-30 minutes on the surface to penetrate the concrete and develop proper oil and water resistance.

6. **IMPORTANT:** Rinse the solution off of the floor thoroughly with a solution of Crete-Clean diluted at 2 oz/gallon using a mop bucket or autoscrubber.

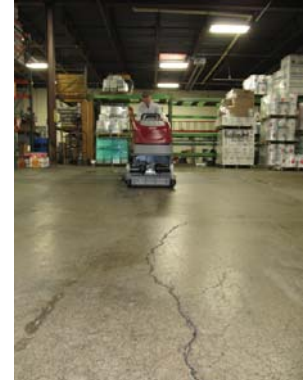
7. For normal protection, apply one coat of Crete-Guard. For high traffic or vulnerable areas, apply two coats. Allow the floor to completely dry before applying a second coat of Crete-Guard.



CLEAN AND HARDEN SURFACES WITH CRETE-CLEAN

2 Crete-Clean can be used as a daily cleaner to maintain the shine of the polished concrete and harden the concrete and make it more durable at the same time.

1. Crete-Clean can be applied by automatic scrubber, mop, pressure sprayer, sponge, or brush.



2. Dilute Crete-Clean at 2 oz/gallon for light duty cleaning, 4 oz/gallon for normal cleaning, and 10 oz/gallon for heavy duty cleaning.

3. Pair Crete-Clean with a 3000-grit diamond floor pad (Twister® Green pad or equivalent) and an automatic scrubber for best results.



4. Use Crete-Clean daily and as needed to keep the polished concrete surface clean and to maintain its shine, as well as harden and improve durability.



RESTORE AND BRING BACK SHINE WITH CRETE-SHINE

3 Crete-Shine can be used when a polished concrete surface has lost some of its shine due to wear and abrasion. Crete-Shine will restore gloss and maintain or improve durability.

1. Dust mop the floor thoroughly. Ensure the floor is clean if needed with Crete-Clean at 2 oz/gallon with a mop or automatic scrubber paired with a 3000-grit diamond floor pad (Twister© Green pad or equivalent).



2. Spray Burnishing: Dilute Crete-Shine 1:8 with water. Spray solution on floor ahead of machine. Burnish with a high speed burnisher until dry or automatic scrubber at 400 RPM.



3. Mop On: Dilute Crete-Shine 1:3 with water. Mop a light coat onto the floor and allow to dry. Burnish thoroughly with a high speed burnisher or automatic scrubber at 400 RPM.

4. Automatic Scrubber: Dilute Crete-Shine at 2 oz/gallon and scrub floor with an automatic scrubber (use a scrubber capable of buffing at 400 RPM for best results). Follow immediately with a high speed burnisher or automatic scrubber at 400 RPM.

5. For light duty restoring: use a 3000-grit diamond floor pad (Twister© Green pad or equivalent) as a burnishing pad.



6. For heavy duty restoring: use a 1500-grit diamond floor pad (Twister© Yellow pad or equivalent) as a burnishing pad, followed by a cleaning with an automatic scrubber equipped with Crete-Clean at 2 oz/gallon and a 3000-grit diamond floor pad (Twister© Green pad or equivalent).



The PROVEN Multi-Clean Method for Polished Concrete Floor Care



Crete-Guard

POLISHED CONCRETE SEALER/PROTECTOR

Water and oil repellent stain protector for polished concrete and grout. Unique additives penetrate the pores of concrete or grout and develop a non-film-forming seal that protects the surface from oil and water. Stains are unable to penetrate the surface and are more easily washed away, leaving the floor looking cleaner, longer.



Crete-Clean

POLISHED CONCRETE CLEANER/DENSIFIER

Formulated to provide powerful cleaning and degreasing of polished concrete and other surfaces, with a unique additive to help densify and harden concrete surfaces. The unique blend of bio-degradable surfactants and environmentally safe solvents penetrates the dirt, grease, and grime and holds them in suspension until removed with a wet pick-up vacuum, mop, squeegee or automatic scrubber. Crete-Clean's concrete densifier helps to harden concrete surfaces, making them more durable and wear resistant with each cleaning.



Crete-Shine

POLISHED CONCRETE RESTORER/SPRAY BUFF

Polished concrete maintainer designed to restore gloss to polished concrete systems that show wear, as well as provide protection and wear resistance to polished concrete surfaces. Quick and easy to apply, Crete-Shine restores the "wet look" on polished concrete floors while enhancing the scuff, scratch and black heel mark resistance.



800-grit diamond floor pad (Twister© White pad or equivalent)

1500-grit diamond floor pad (Twister© Yellow pad or equivalent)

3000-grit diamond floor pad (Twister© Green pad or equivalent)

Multi-Clean Technical Support

Call Multi-Clean Technical Support with questions or comments between 8:00 am - 5:00 pm CST at 1-800-433-6816 and ask for Technical Support.



600 Cardigan Road
Shoreview, Minnesota
Phone 651-481-1900
www.multi-clean.com