

Bio-Pump DC

Battery Operated Pump

Part Number 421805

Please use this equipment with care and observe all warnings and cautions.

WEAR protective clothing and eyewear when dispensing chemicals, emptying equipment or changing metering tips

ALWAYS observe safety and handling instructions.

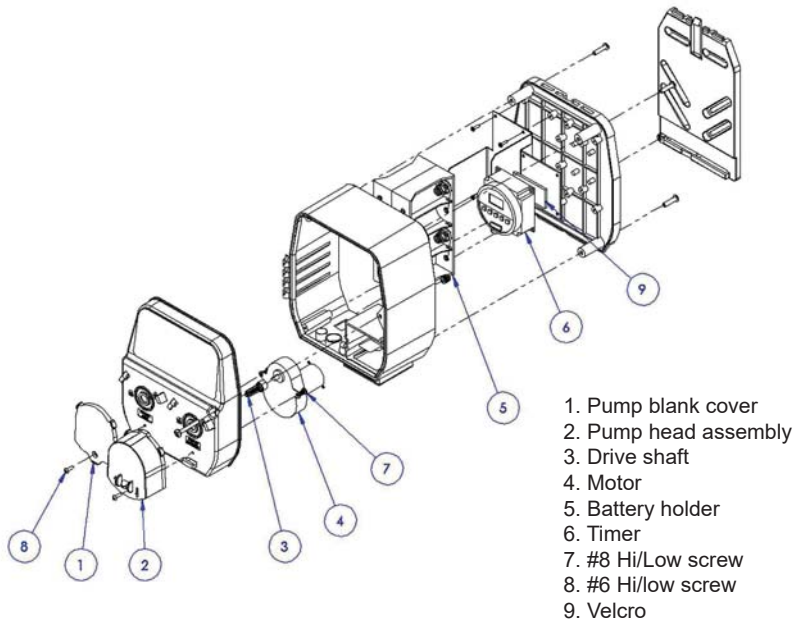
ALWAYS direct discharge away from you or other persons.

ALWAYS dispense chemicals in accordance with instructions on label and SDS.

Exercise **CAUTION** when maintaining your equipment.

KEEP equipment clean to maintain proper operation.

ALWAYS re-assemble equipment according to instruction procedures. Be sure all components are firmly screwed or latched into position.



Setup Instructions

1. Remove all parts from carton.
2. Mount base plate to wall.
3. Install squeeze tube, see below.
4. Install 8 D size batteries.
5. Program timer, see back page.
6. Attach pump to base plate.
7. Route draw hoses to product and drain.

Squeeze Tube Installation

Install the squeeze tube by removing the pump cover by depressing the tab on the front of the unit, Fig 1.

Place one end of the squeeze tube on the left side of the pump in the slot provided, Fig 2.

Wrap the squeeze tube around the rollers of the pump. Then stretch the squeeze tube so that the end of the tube goes into the slot provided, Fig 3. Replace cover on the pump.



Fig 1

Tab



Fig 2



Fig 3



Fig 4



Operation
Programming the Dispenser

CAUTION: When the unit is powered the first time, a rechargeable display back up battery begins charging. When fully charged it provides approximately 200 hours of reserve time before the display and program may be lost. If the unit loses power, it will not lose the program for 200 hours, but it will not run the pump from the rechargeable display back up battery and will not dispense chemical. If the 8 D cell batteries run out of power check to make sure the programming is still in the timer. If they were off for more than a week you will probably have to reprogram the timer.

A. Press the reset button before programming.
 Note: If a mistake is made during the programming, simply push the reset button and start over.

B. Set the Time and Day
 When the unit arrives the display may be blank or may display a time. Insert (8) D-Cell batteries into the dispenser and that will provide power to the timer.
 NOTE: Make sure that the indicator bar in the bottom of the display is over the word OFF. Press the MANUAL button until it is in the OFF position.

1. To set the time and day of the week, press and hold the CLOCK button and press the day, hour, and minute buttons until the proper day, hour, and minute is achieved.
 Note: The days will be across the top of the screen and will advance as the button is pressed. The time must be set to AM or PM. Pressing in the Day, Hour, or Minute button for three seconds will advance the setting until the button is released.

Note: The days will be across the top of the screen and will advance as the button is pressed. The time must be set to AM or PM. Pressing in the Day, Hour, or Minute button for three seconds will advance the setting until the button is released.

C. Programming the Dispensing Events: Up to 8 independent dispensing events can be programmed

1. Press and release the TIMER button to enter the programming mode. The event number will be in the bottom left corner. Note: To program a full event, a pump start time and stop time will need to be programmed.

NOTE: THE PUMP WILL RUN FOR 23 HOURS 59 MINUTES IF NO STOP TIME HAS BEEN SET.

a) Press the "DAY" button until the desired days are shown.
 b) Press the "HOUR" and "MINUTE" buttons until the time is reached when the pump should start.

Note: AM or PM in top left corner of screen.

2. Press and release the TIMER button again to move to programming the pump stop time.

a) This setup will be used to turn the pump off. Use table 1 to determine the pump run time.

b) Press the "DAY" button until the days match the days programmed in the pump start portion of the programming.

c) Press the "HOUR" and "MINUTE" buttons until the desired run time is reached.

3. To program another event, press TIMER button again for Programs 2 through 8 and follow Programming Steps 1 and 2 above. Every START function needs a corresponding STOP function in order to stop the pump.

4. When finished programming, push the CLOCK button again to return to time of day (normal) display.

D. Priming the Pump
 1. To prime the pump, press the MANUAL button – the bar at the bottom of the display will move from right to left from OFF to AUTO to ON. When it reaches ON, the pump will run until the MANUAL button is pressed again. Use this position to prime the pump. To stop priming press the MANUAL button – the bar at the bottom of the display will move from left to right from ON to AUTO to OFF.

Note: The unit may continue to run in the AUTO position. The MANUAL button must be pressed until the bar at the bottom of the display is over the OFF position to stop the pump.

E. Setting to Programmed Position
 1. Press the MANUAL button until the bar in the bottom of the display moves from the OFF to the AUTO position. If the unit is not in the AUTO position, the program will not be executed.

Run Time Minutes	Amount
1	3.5 oz (110ml)
3	10 oz (295ml)
5	17.5 oz(550ml)
6	20 oz (590ml)
10	35 oz (1100ml)
20	70 oz (2200ml)

Table 1



600 Cardigan Road
 Shoreview, Minnesota
 Phone 651-481-1900